

Clerkenwell Road, EC1M



A two bedroom apartment of approximately 800sqft located on the second floor of this popular new development in EC1.

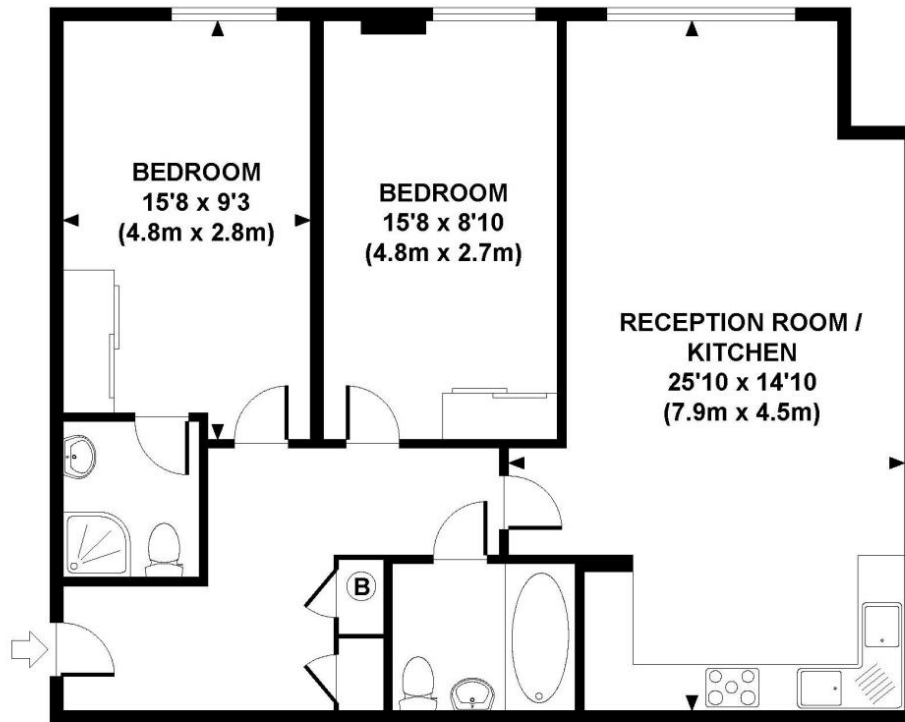
Arranged with two double bedrooms an en-suite shower room to the main bedroom, a further contemporary guest bathroom and a large open plan reception/kitchen. Finished to a high specification throughout with Bosch appliances in the kitchen and Villeroy & Boch bathroom suites.

The development is extremely well located for the City and within 1/4 mile of Barbican underground station.

Price: £507,000 Leasehold

CHARTERHOUSE, CLERKENWELL ROAD, EC1

Approx. gross internal area
803 Sq.Ft. / 75 Sq.M.



SECOND FLOOR

Every attempt has been made to ensure the accuracy of this floorplan however, measurements are approximate and for illustration purposes only. Measured in accordance with R.I.C.S. code of measuring practice. Not to scale.

Important Notice: 1. These particulars are prepared for guidance purposes only. They are intended to give a fair overall description of the property but are not intended to constitute any part of an offer or contract 2. Nothing in these particulars shall be deemed to be a statement that the property is in good structural condition or otherwise nor that any services, appliances, equipment or facilities are in good working order 3. Whilst all information contained in these particulars whether in the text, plans or photographs is given in good faith, intending purchasers must make their own enquires as to the accuracy of all matters upon which they intend to rely.