

Britton Street, EC1M

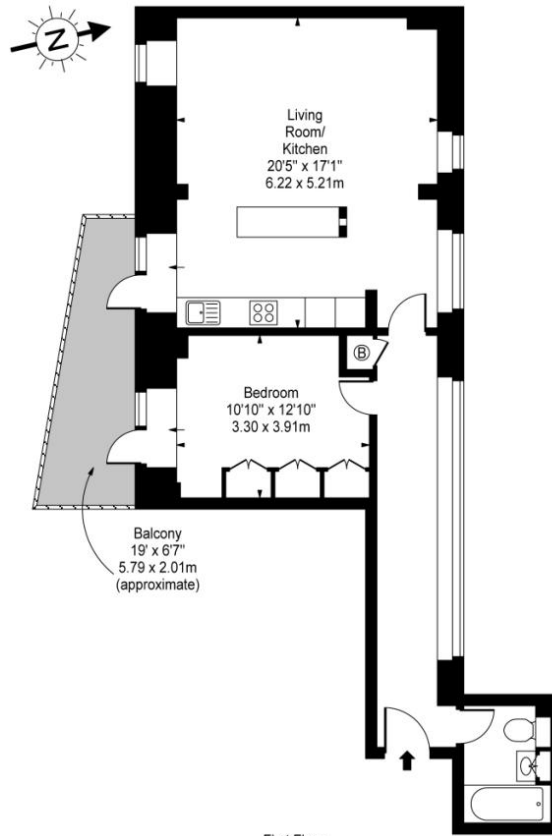


A charming and spacious one bedroom conversion located incredibly close to Farringdon station. Over 700sqft of internal space, offering a beautifully appointed open-plan kitchen/reception with doors leading to a generous south-facing balcony, a large double bedroom with fitted wardrobes and a contemporary bathroom. The apartment perfectly blends modern styling with the original fabric of the building - with white-washed brickwork and high ceilings.

Britton Street is one of the most popular locations in Clerkenwell, just south of Clerkenwell Road and parallel to Turnmill Street. Farringdon station is the nearest tube with the new Cross Rail link, making this a great investment and home.

Price: £465,000 Leasehold

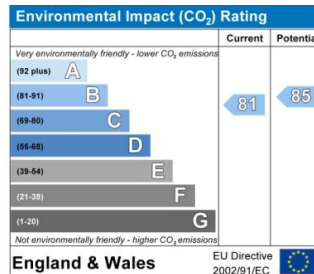
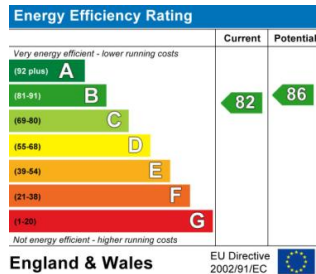
Dickens Court, EC1
 Approx. Gross Internal Area 715 Sq Ft - 66.42 Sq M



First Floor

For Illustration Purposes Only - Not To Scale Floor Plan by www.pixandplans.com Ref: No.401

This floor plan should be used as a general outline for guidance only and do not constitute in whole or in part an offer or contract. Any intending purchaser or lessee should satisfy themselves by inspection, searches, enquiries and full survey as to the correctness of each statement. Any areas, measurements or distances quoted are approximate and should not be used to value a property or be the basis of any sale or let.



Important Notice: 1. These particulars are prepared for guidance purposes only. They are intended to give a fair overall description of the property but are not intended to constitute any part of an offer or contract 2. Nothing in these particulars shall be deemed to be a statement that the property is in good structural condition or otherwise nor that any services, appliances, equipment or facilities are in good working order 3. Whilst all information contained in these particulars whether in the text, plans or photographs is given in good faith, intending purchasers must make their own enquires as to the accuracy of all matters upon which they intend to rely.