

Kingsland Road, E8

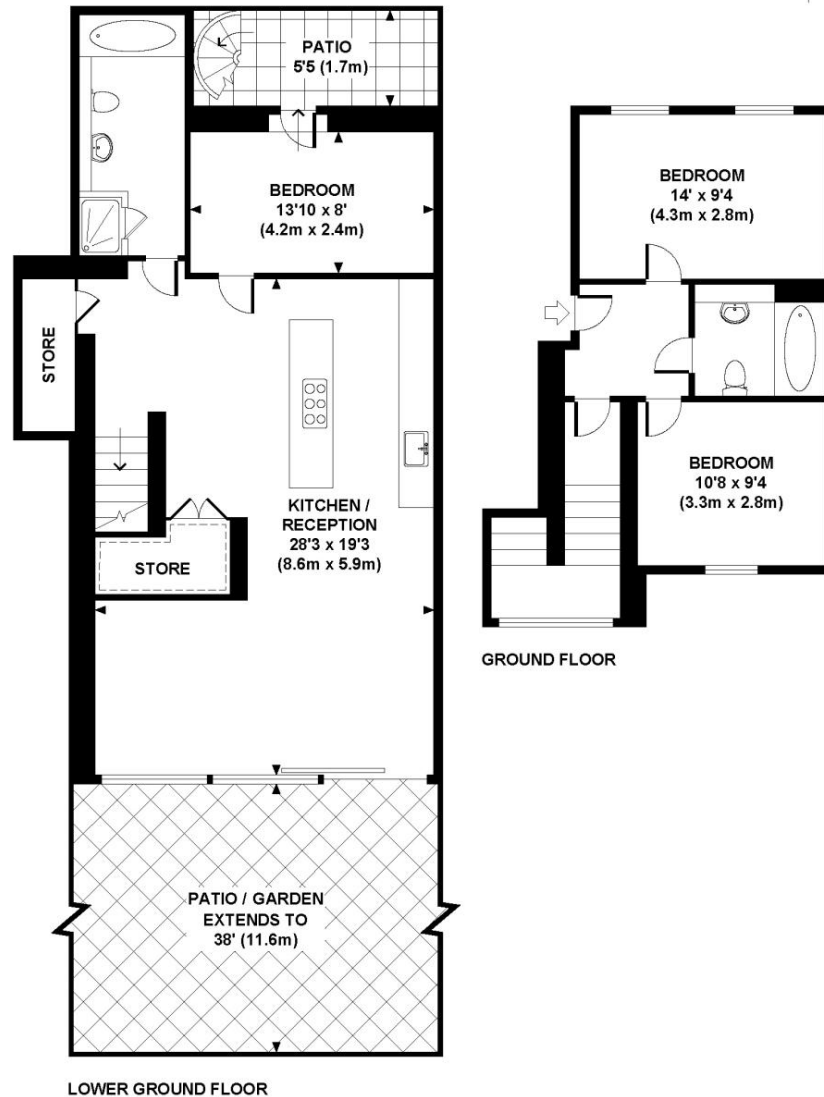


Previously a large period freehold, this boutique style development consists of just three newly converted apartments. 282 Kingsland Road is located within 500 metres of the new Haggerston station, part of the new East London line extension due to open in 2010. (www.tfl.gov.uk) This particular apartment is situated on the lower ground floor and is arranged over approximately 1160sq/ft and comprises three bedrooms, two bathrooms and a large open plan reception room/kitchen. The apartments benefit from numerous bus routes providing easy access to the City and the West End. The property has been converted with attention to detail and benefits from a high specification throughout including engineered oak floors, fully fitted kitchens with appliances as well as a large rear garden. Hackney is a vibrant area with a reputation for arts; the Hackney Empire is close by and there is a wide selection of restaurants and bars stretching from Mare Street through to the popular London Fields Park to Broadway Market. Viewing highly recommended and is strictly by appointment only, through Currell Residential 0207 241 4111.

Price: £700,000 Leasehold

KINGSLAND ROAD, E8

Approx. gross internal area
1165 Sq.Ft. / 108 Sq.M.



Every attempt has been made to ensure the accuracy of this floorplan however, measurements are approximate and for illustration purposes only. Measured in accordance with R.I.C.S. code of measuring practice. Not to scale.

Important Notice: 1. These particulars are prepared for guidance purposes only. They are intended to give a fair overall description of the property but are not intended to constitute any part of an offer or contract 2. Nothing in these particulars shall be deemed to be a statement that the property is in good structural condition or otherwise nor that any services, appliances, equipment or facilities are in good working order 3. Whilst all information contained in these particulars whether in the text, plans or photographs is given in good faith, intending purchasers must make their own enquires as to the accuracy of all matters upon which they intend to rely.